



Today Is December 23, 2015

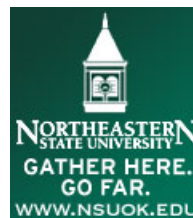
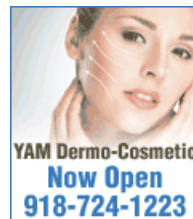
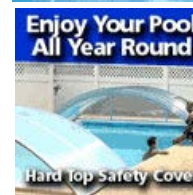
Greater Tulsa Reporter



Contact GTR News

Sections

- [General News](#)
- [Tulsa Weather](#)
- [Columns](#)
- [Civics](#)
- [Economy & Business](#)
- [Variety](#)
- [Dining & Entertainment](#)
- [Fashion](#)
- [Faith](#)
- [Home & Garden](#)
- [Health & Wellness](#)
- [Saluting Our Military](#)
- [Calendar](#)
- [Kudos](#)
- [GTR Puzzles](#)
- [Recipes](#)
- [Education](#)
- [Union Education](#)
- [Jenks Education](#)
- [Broken Arrow Education](#)
- [Tulsa Education](#)
- [Owasso Education](#)
- [Bixby Education](#)
- [Sports](#)
- [Composite Football Schedule](#)
- [Union Sports](#)
- [Jenks Sports](#)
- [Broken Arrow Sports](#)
- [Mid-Town Tulsa Sports](#)
- [Owasso Sports](#)
- [Bixby Sports](#)



Library Embraces Environment

By EMILY RAMSEY
Managing Editor



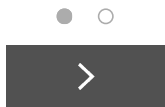
COMING SOON: Mike Leitch, capital projects manager for the Tulsa City-County Library, discusses the new features of the Central Library at 5th Street and Denver Avenue. The library has been undergoing renovations since early 2014 and is expected to reopen in summer 2016. (See story on page 16.)

EMILY RAMSEY for GTR Newspapers

You and 1,425 others like this. 1,425 people like this.

Air Assurance

AC & Heat Service and Repair Fast Home of Lifetime Repair Warranty



✕ Work began in early 2014 on renovations to downtown Tulsa's Central Library, with an expected reopening in summer 2016.

The updated library will feature new technology and other features to improve the customer experience and allow for greater energy efficiency.

The building will use the energy-efficient air distribution Active Chilled Beams system to provide heat and air conditioning for the facility.

Chilled beams use chilled and hot water as the main energy transport, thus improving overall HVAC efficiency compared to a traditional air heating/cooling system.

Ceiling-mounted induction-activated chilled beams require only enough ducted air to handle ventilation and humidity requirements. This system will keep ductwork sizes to a minimum and allow ceiling spaces to remain high.

Chilled beams were developed in Norway in the 1970s and are standard practice

in Europe.

The library’s main entrance will be on the street level on the south side of the building, facing 5th Street.

Immediately inside the front doors will be a coffee shop and an area to pick up books placed on hold.

There will also be a movable partition that will close off the library and allow the public to enter those areas during the library’s non-operating hours.

The library’s first, or street level, floor will include its children’s section, open work space and a maker’s lab with 3D printers.

On the second floor will be fiction and nonfiction collections, staff areas, study cubes, including glass study rooms on the east and west sides of the building, and public access to the library’s south-facing balcony. The north-facing balcony will be open to library staff only.

The balcony hasn’t been open to the public for a very long time, says Mike Leitch, capital projects manager for Tulsa City-County Library. “We thought, this is wasted square footage so why not do something cool?”

The library will offer close to 20 study rooms that can be reserved with a valid library card.

The glass study rooms are equipped with insulated glass and low-e film which diminish heat and air and provide more stability, says Leitch.

On the library’s third floor will be the research center, including a room that will hold the library’s Tulsa and Oklahoma collection, staff work spaces and a computer lab.

Raised floors throughout the library will allow more convenient and greater access to electrical outlets, with wiring that runs underneath the floor.

The library’s two floors below ground will include staff offices consolidated on one floor, as opposed to scattered throughout the library as they were previously, Schusterman Learning and Creative Center and Aaronson Auditorium.

To the west of the library will be a 143-space parking garage, which will include parking spaces for low-emitting, fuel-efficient cars and infrastructure for electric car charging stations.

In between the parking garage and library will be a green space equipped with a large LED display screen to allow for outdoor family movie nights.

The library’s stormwater management plan will allow the library to infiltrate, collect and reuse runoff water or evapotranspiration to irrigate the garden and surrounding landscaping.

Also, along the entire Fifth Street entrance, pervious pavers will be used to capture stormwater into the library’s stormwater collection system.

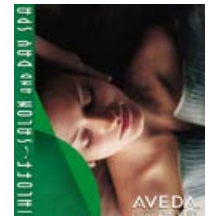
Updated 12-22-2015

[Back to Top](#)

READER COMMENTS

Name	Remember
email (we never post emails)	
http://	
Message	

Textile Help



[Back to Top](#)

[Contact GTR News](#)



The advertisement banner features a green and blue background. On the left is the Bard logo, which includes the word "Bard" in a white serif font on a red background, with "SINCE 1914" in smaller white text below it. To the right of the logo, the text "A smarter option for school HVAC." is written in a white, sans-serif font. Further right is a photograph of a white HVAC unit with a red apple logo and the text "This is a science" on its side. On the far right, a blue rectangular box contains the text "GET TO KNOW BARD >>" in white, bold, sans-serif font. A small "X" icon is visible in the top right corner of the banner.